



Interior Design BRIEF



INTREPID DESIGN
STUDIOS

CLIENT BRIEF

A family of three, including a financial investor, and a lawyer/mother of a three-year old, moved into a Colonial Revival style home in the Washington D.C. suburb of Arlington, VA.

This power couple wanted an "adult" entertaining space in their new home that felt like an intimate, back-room conversation.

The house entry and traffic flow through and to different levels and areas of the house spoked from and this main room.



CONCEPT



International Design Studios believe that every part of a home should be utilized to its fullest potential. In this case, the couple actually only entertained once or twice a quarter.

Instead of relinquishing the space to occasional "adult" visits we designed a space with the classic, timeless elegance of a Steinway, Blüthner or Fazioli piano.

We recommended either custom-made sofas or customizable retail-sourced sofas, upholstered in a durable velvet with welt detailing, that signaled the tailoring of a Saville Row suit made with a sumptuous understated but forgiving material ready for the red carpet, or cozy reading time by the fireplace with their daughter.

We also encourage clients to identify something personally meaningful as an anchor to their home design. In this case, the client's multicultural heritage was represented in a hand embroidered 19th century landscape mural.

CONCEPT

To lift the atmospherics, we:



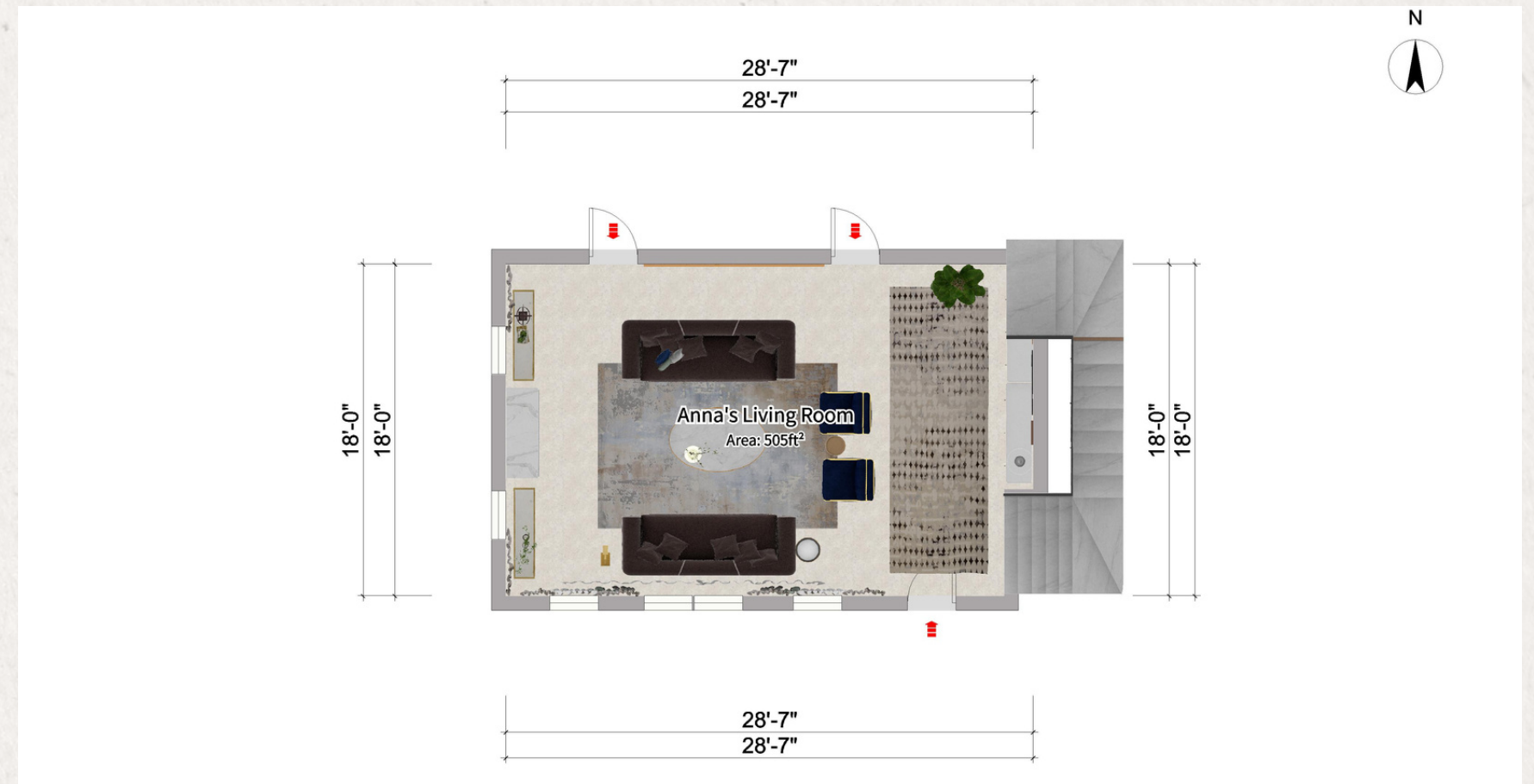
- Streamlined the fireplace surround but kept the well-crafted moldings
- Introduced reflective warm metals
- Balanced the curvy weight of the sofas with geometric elements that had "negative see-through space"
- Created hard-working storage under the stairs with glamorous lacquered fronts that undulated like piano keys
- Painted the doors in black laquer to repeat the black elements of the new windows in an elegant but understated way
- Transformed the lighting experience from harsh overheads to strategically positioned, task and ambient elements that puts everyone in their best light.

PLAN PROPOSAL

Entry-non/Entry

Storage, Lighting, Window
Treatments

Sitting/Living Room Furnishing



LIGHTING



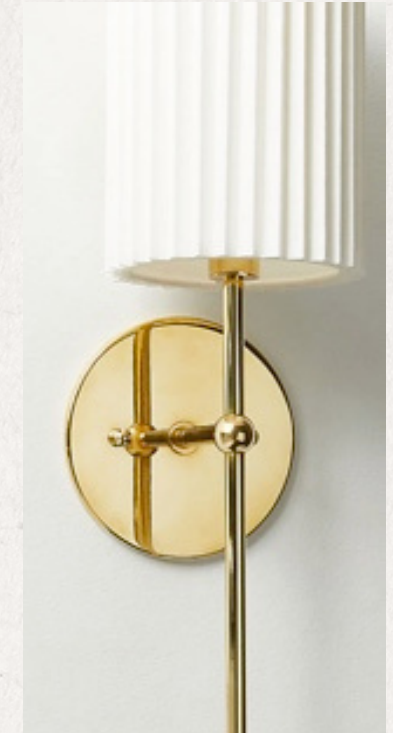
Ambient Light



Task Light



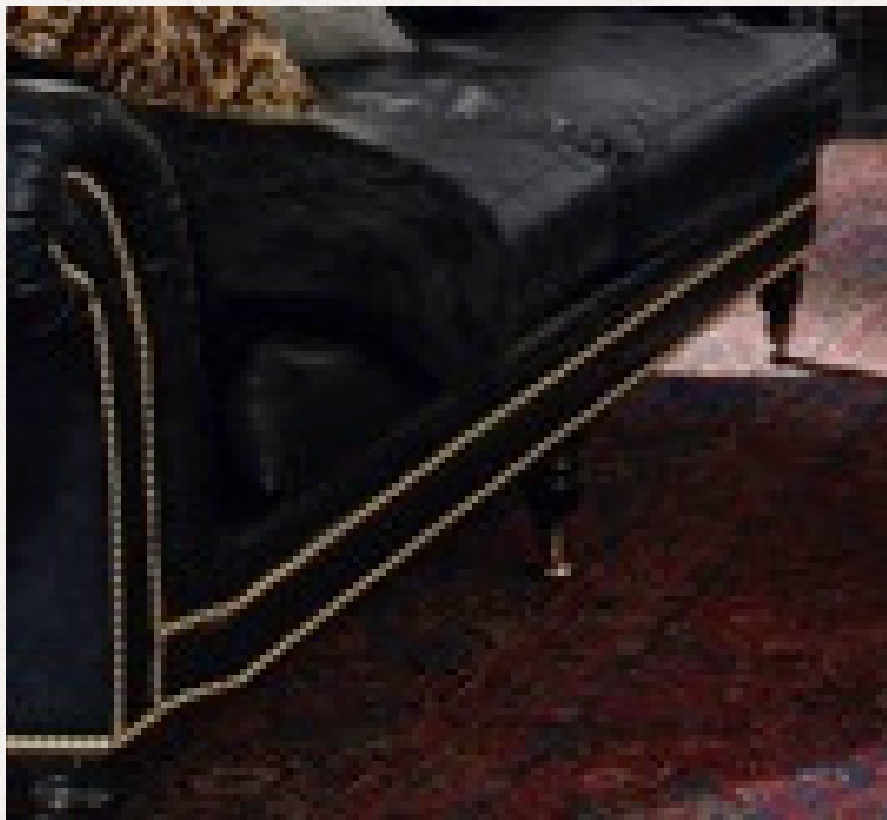
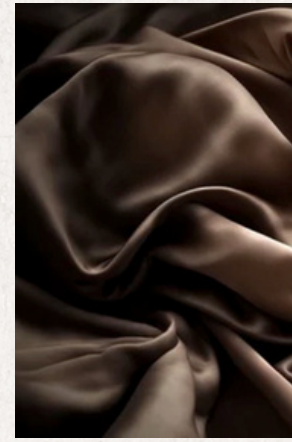
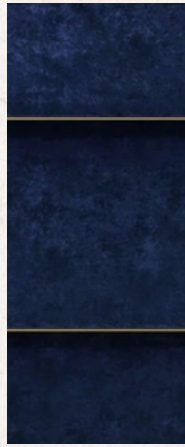
Table lamp



Sconce Light



MATERIALS



Upholstered
Furnishings



Cabinetry



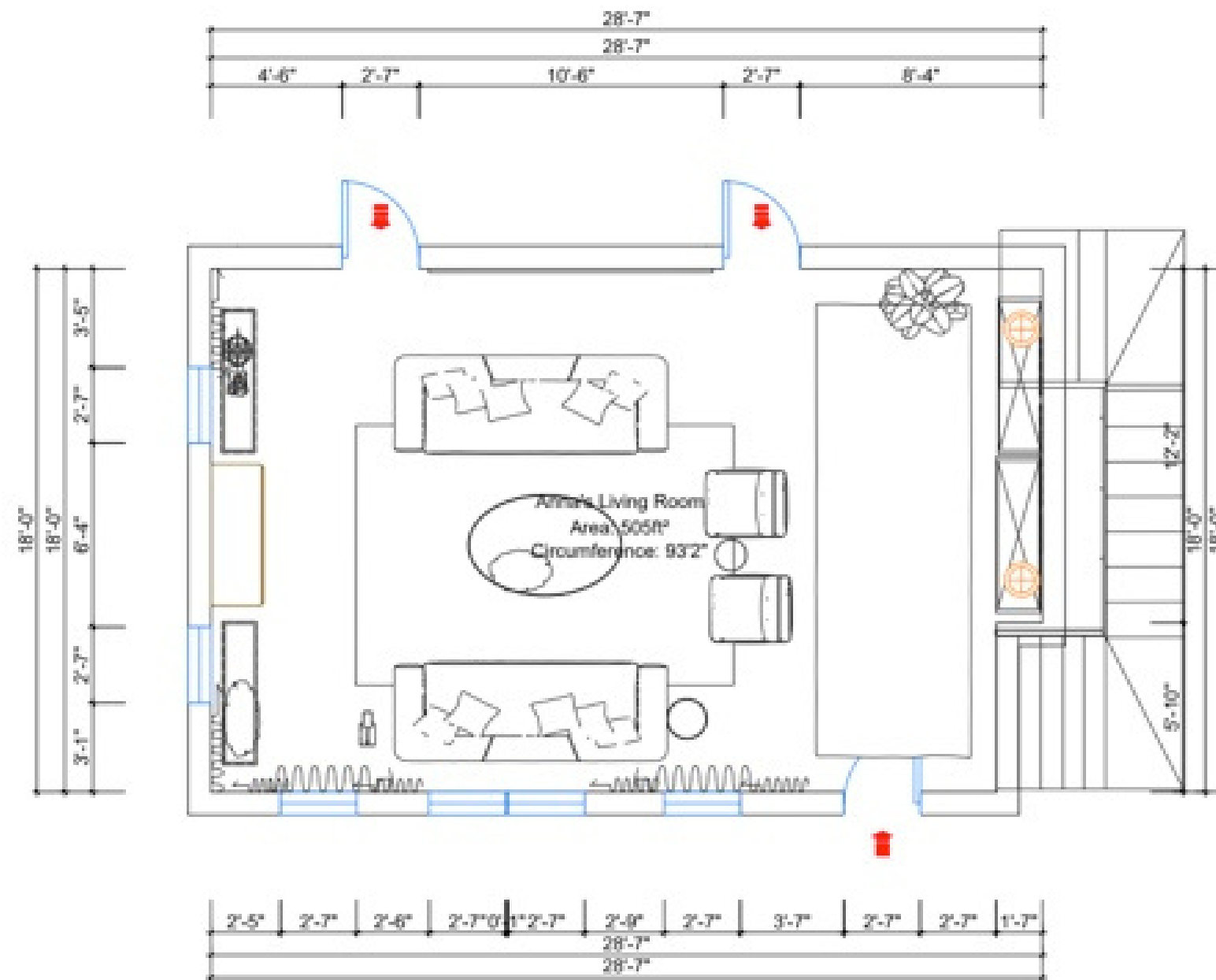
Wool Rug



Marble

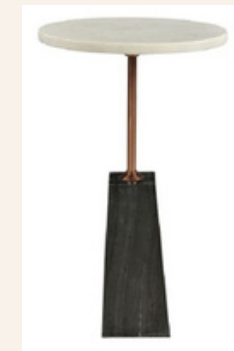
FURNITURE PLAN & ACCESSORIES

CHECKLIST



Furniture Plan(12/55"=1'-0")

- Two mirroring sofas
- Two club chairs
- Two tables for under the windows flanking the fireplace
- Coffee table
- Two side/drink tables
- Two buffet cabinets combined into one long linear installation
- Rugs (large for seating & runner)
- Throw
- Table top decor (tray, vase, candles, boxes, objet, bar glassware)
- Artwork: large tapestry mural, complimentary landscape over the fireplace, mirror over buffet units
- Window treatments and hardware
- Lighting: chandelier, two sconces, floor and table lamps



BUDGET

Interior Design	\$1,000
Materials	\$3,500
Renovation	\$2,500
Furniture/lighting	\$25,000

TIMELINE





INTREPID DESIGN STUDIOS

CONTACT DETAILS

Website

www.IntrepidDesignStudios.com

Email Address

hello@IntrepidDesignStudios.com

Phone Number

+1 202-374-3994